

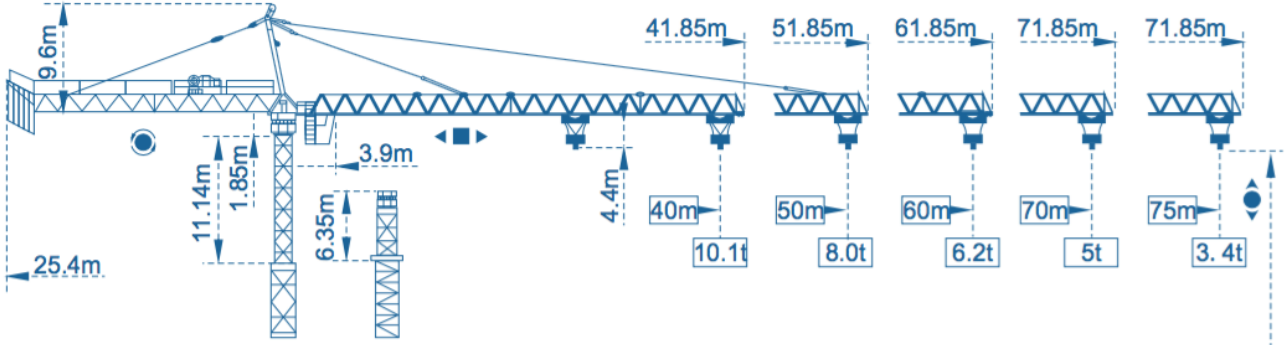


STT 7534-20

Experts in the field

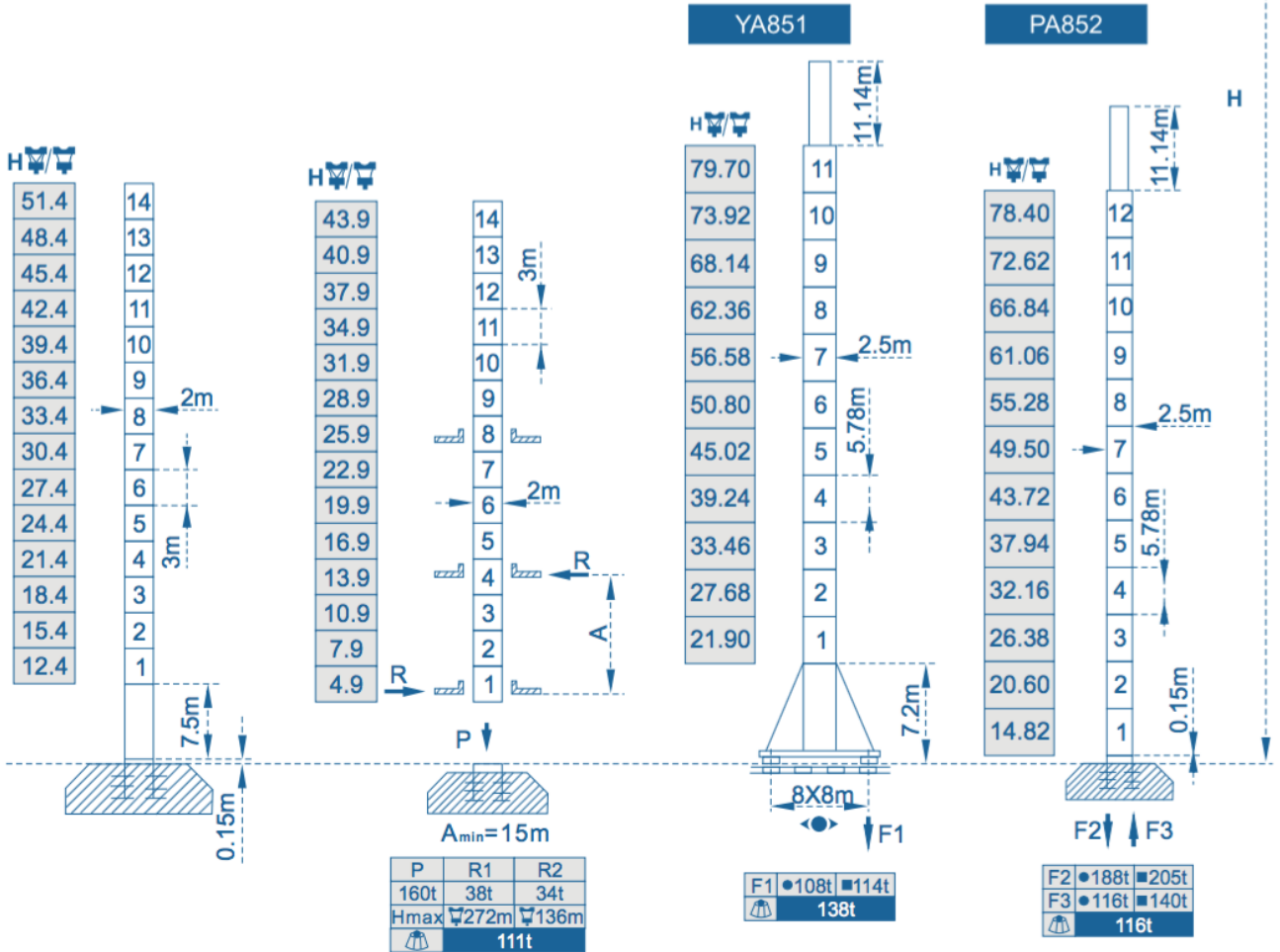



Outline Dimensions



Mast $\square 2\text{m} \times 2\text{m}$

$\square 2.5\text{m} \times 2.5\text{m}$



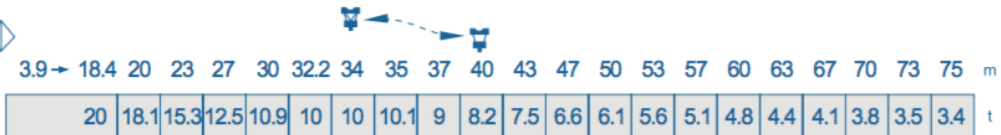
● in service ■ out of service
 Without load and ballast with longest jib and maximum height

F= Reactions

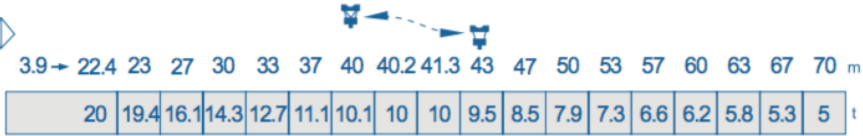
Load diagrams

Jib

70m



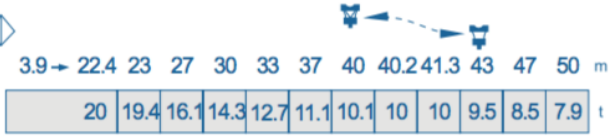
70m



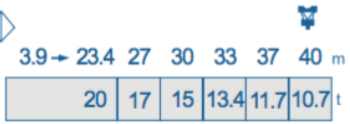
60m





50m



40m



Standard trolley 2/4 fall (when using  subtract 0.35t from the loads )

Specifications Mechanisms						
Mechanisms	Motor type	Speeds m/min		Capacity t.	Rope lenght	Motor kW
起升 Hoisting	75RCS50 ⬆️	2 fall	0-25	10	550m >550m ★	51.5
			0-50	5		
	4 fall	0-12.5	20			
		0-25	10			
	75LVF50R ⬆️	2 fall	0-23	10	600m >600m ★	55
			0-46	5		
	4 fall	0-11.5	20			
		0-23	10			
	102LVF50F ⬆️	2 fall	0-28	10	680m >680m ★	75
			0-56	5		
	4 fall	0-14	20			
		0-28	10			
120LVF50F ⬆️	2 fall	0-39	10	520m >520m ★	90	
		0-78	5			
4 fall	0-19.5	20				
	0-39	10				
150LVF50 ⬆️	2 fall	0-46	10	900m >900m ★	110	
		0-82	5			
4 fall	0-23	20				
	0-41	10				
Trolleying	XD185K ⬆️	15-30-60			185N.m	
	12DVF ⬆️	0-60			185N.m	
	12DCV ⬆️	0-60			9	
Slewing	OMD85 ⬆️	0-0.7 r/min			2 × 9	
	RCV185 ⬆️	0-0.7 r/min			3 × 185N.m	
	37RVF ⬆️	0-0.7 r/min			3 × 9	
Travelling	56TVF ⬆️	0-32			8 × 5.2	
	RT843 ⬆️	0-16-32			8 × 2.6/5.2	

★ To be supplied according to client's specific requirements

This commercial documents is not legally bindig.
For any technical information, please refer to
the corresponding instructions.

